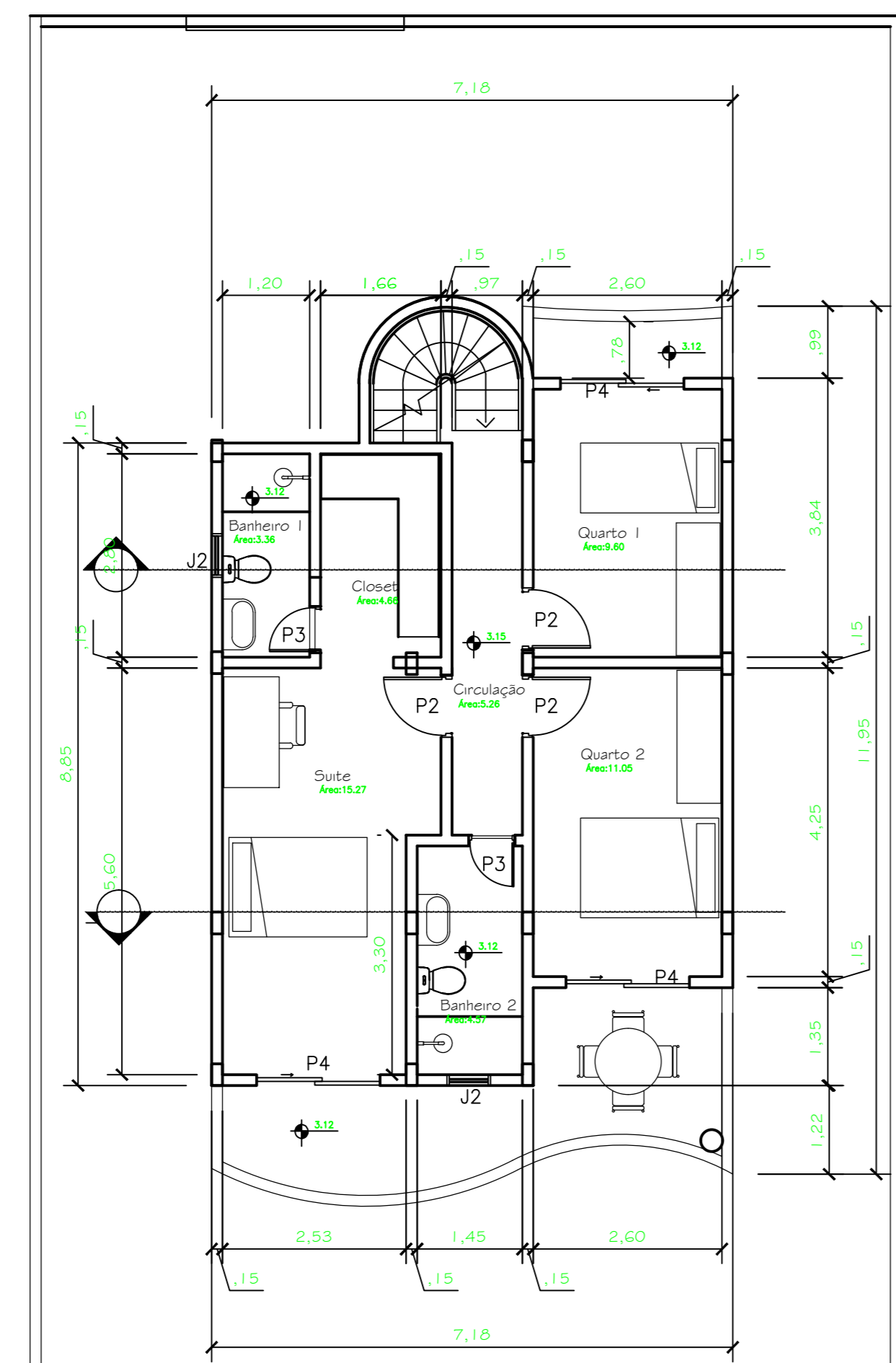
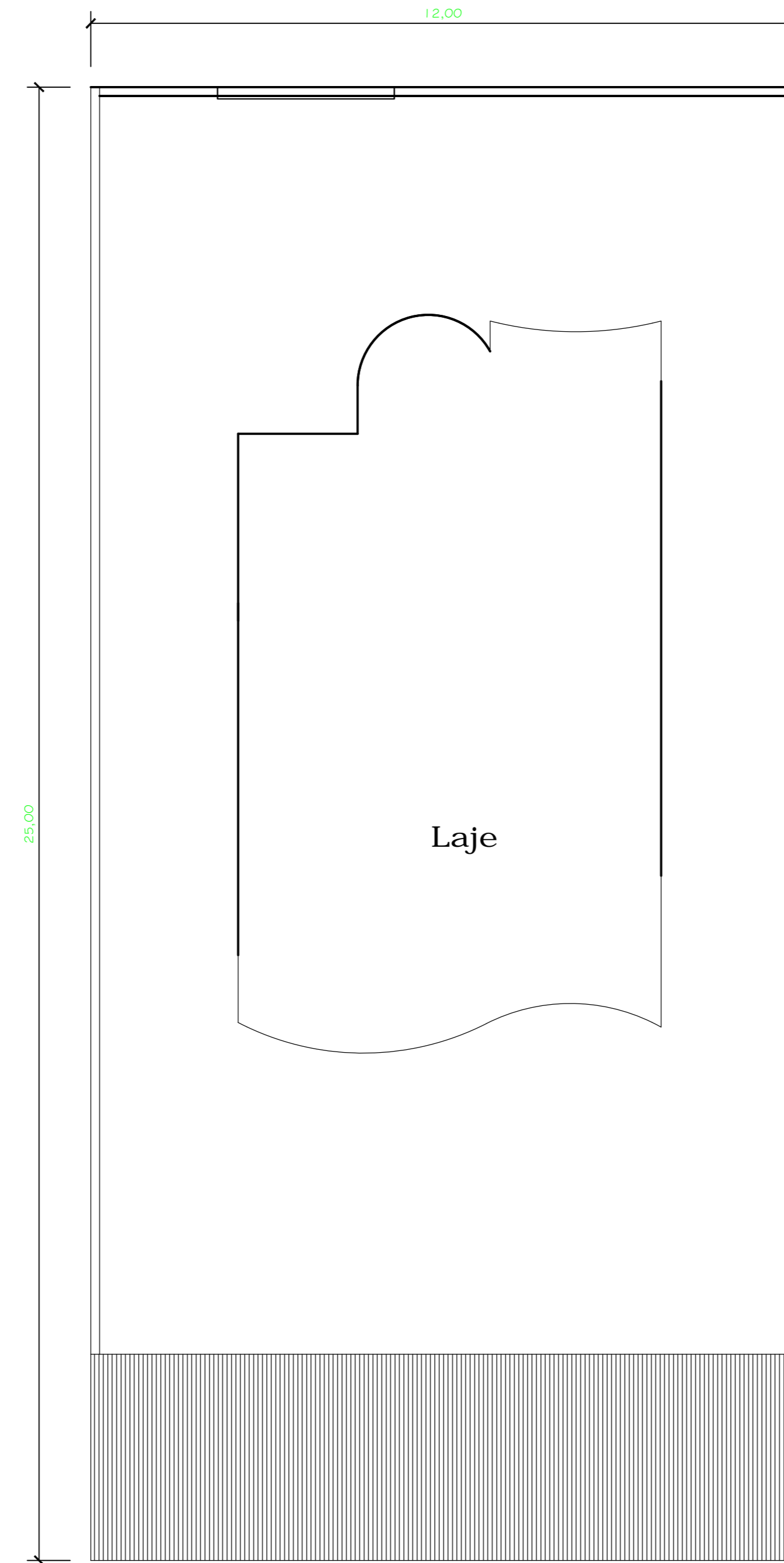


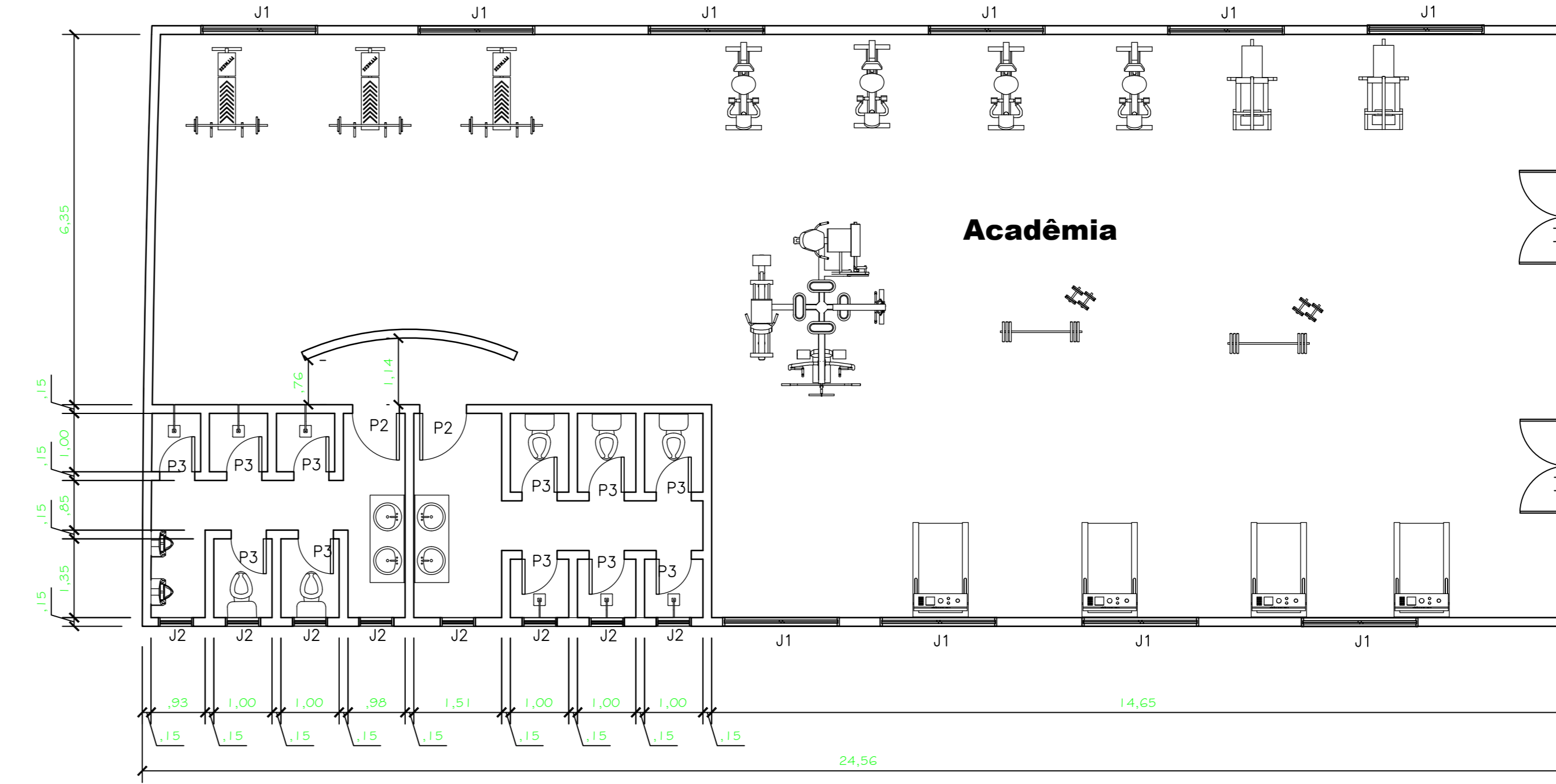
Planta Baixa - Terreo - Casa tipo II



Planta Baixa - 1º Pavimento - Casa tipo II



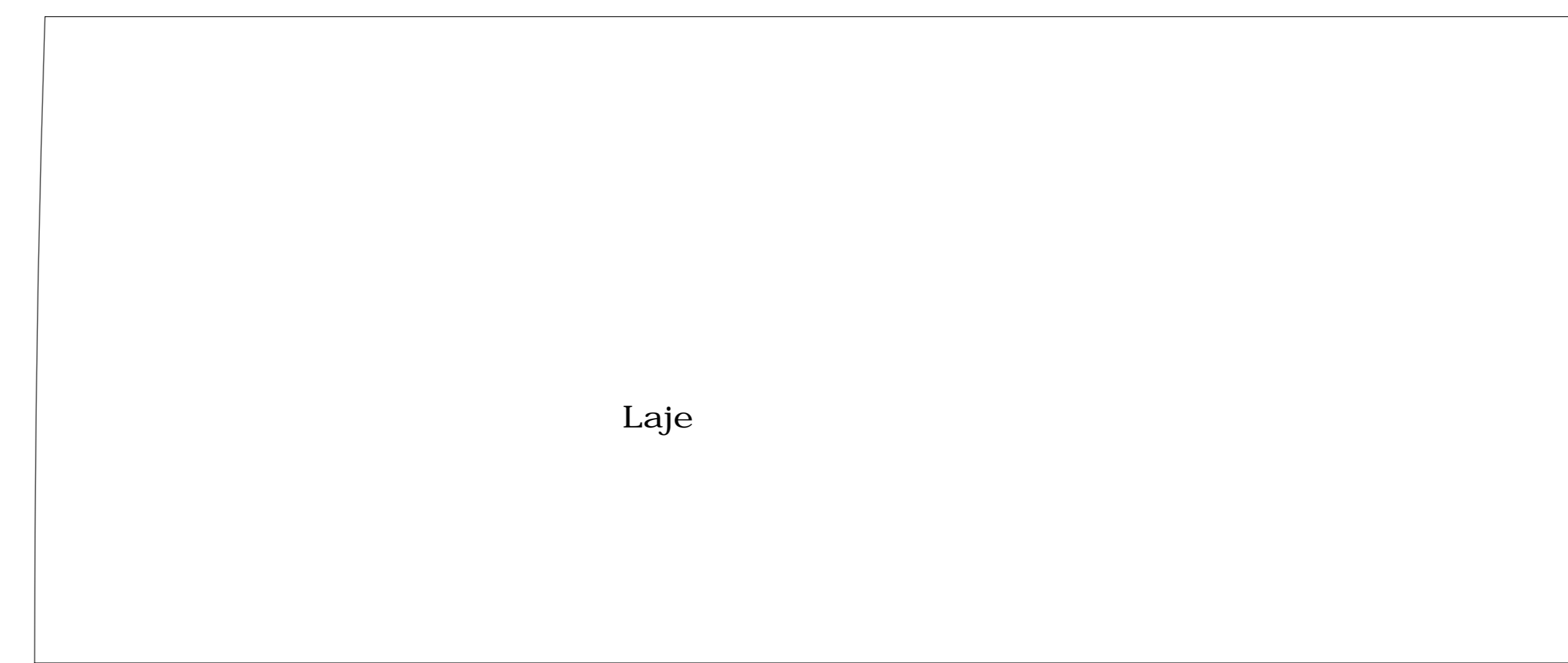
Planta de Cobertura - Casa tipo II



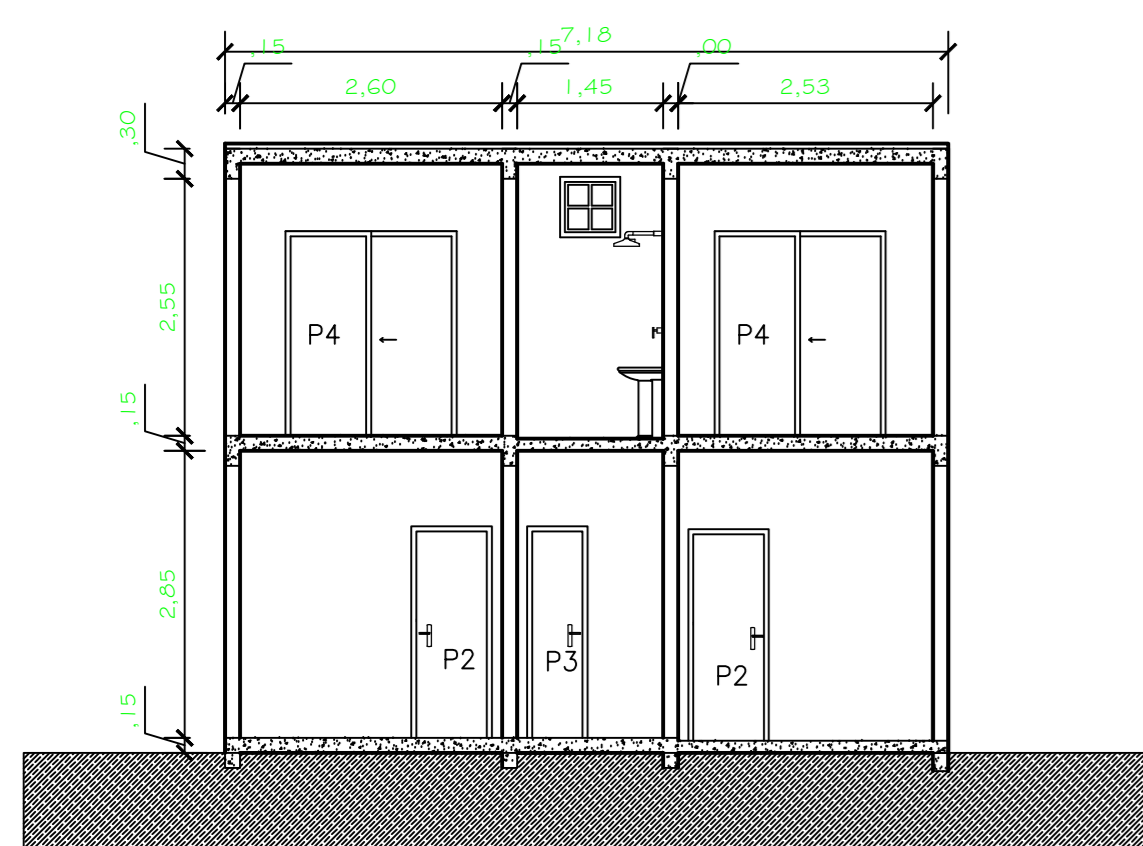
Planta Baixa - Academia

LEGENDA ESQUADRIAS ACADEMIA

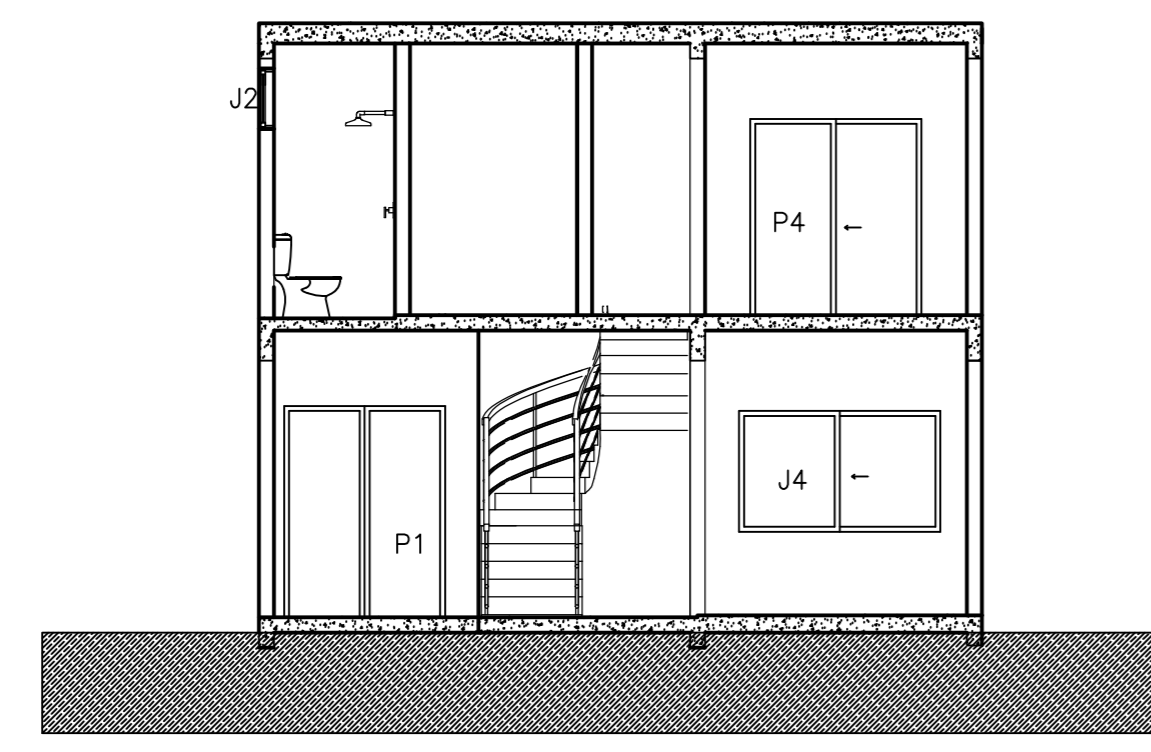
JANELAS	PORTAS
J1 2,00x1,00/1,00	P1 1,60x2,10
J2 0,60x0,60/2,00	P2 0,80x2,10
	P3 0,60x2,10



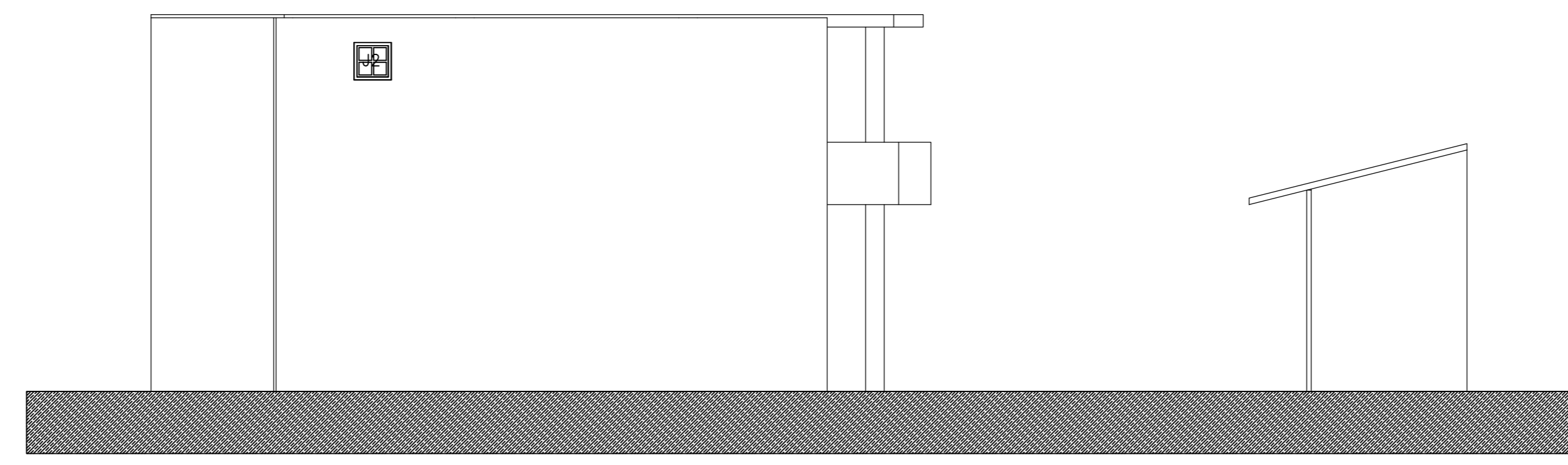
Planta de Cobertura - Academia



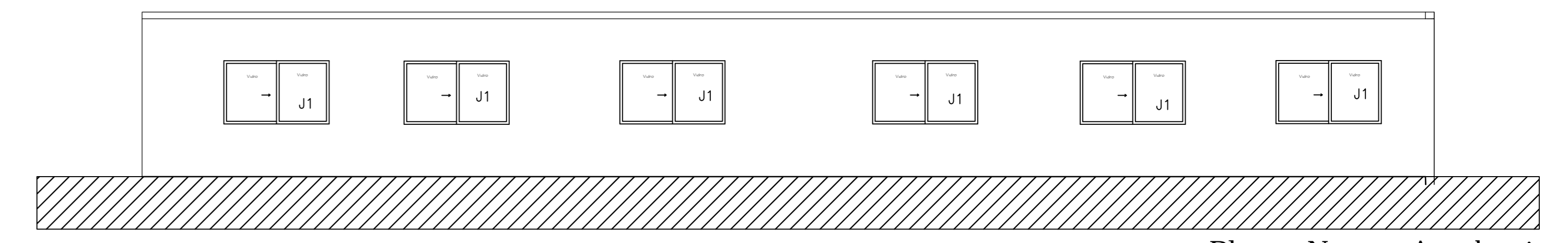
Corte 2 - Casa tipo II



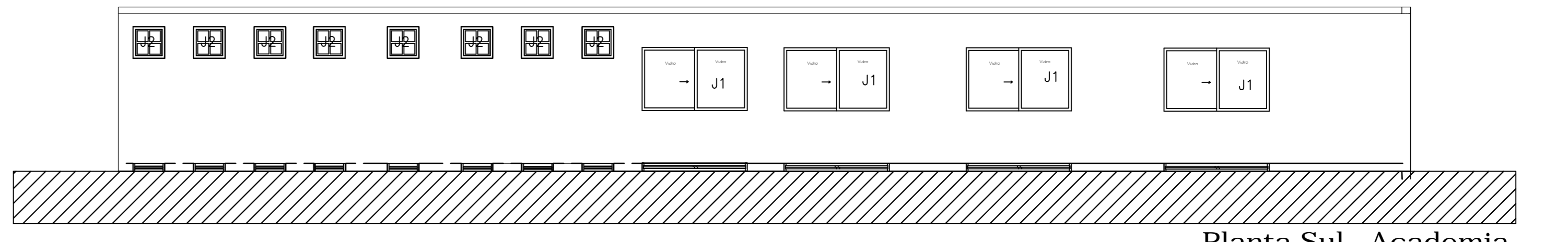
Corte 1 - Casa tipo II



Fachada Leste - Casa tipo II



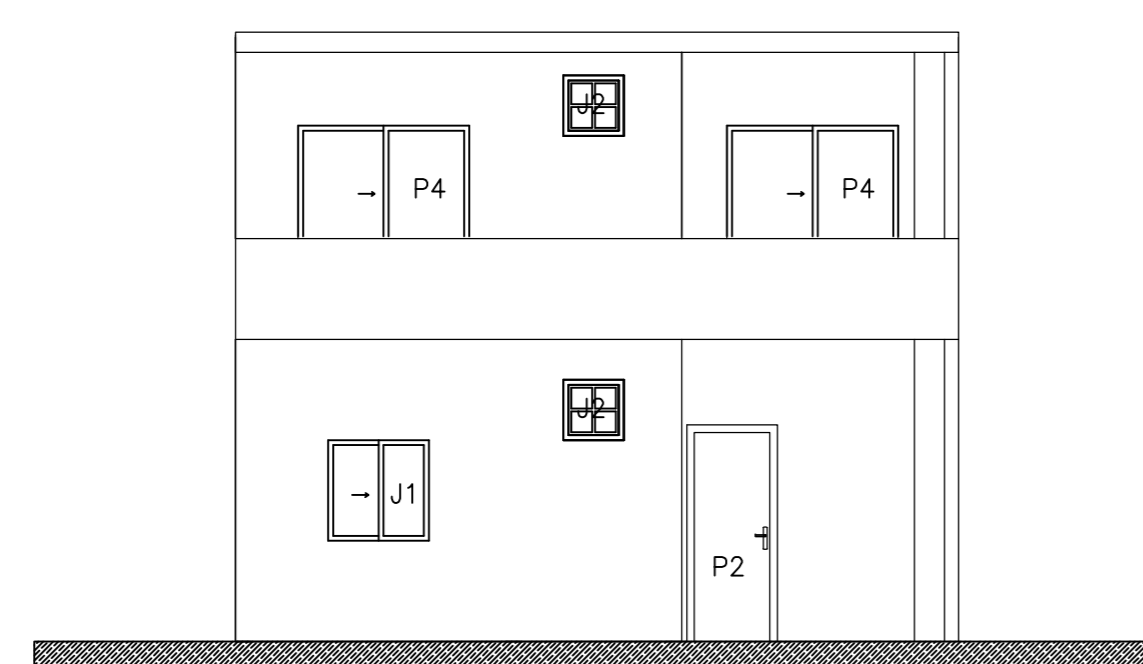
Planta Norte - Academia



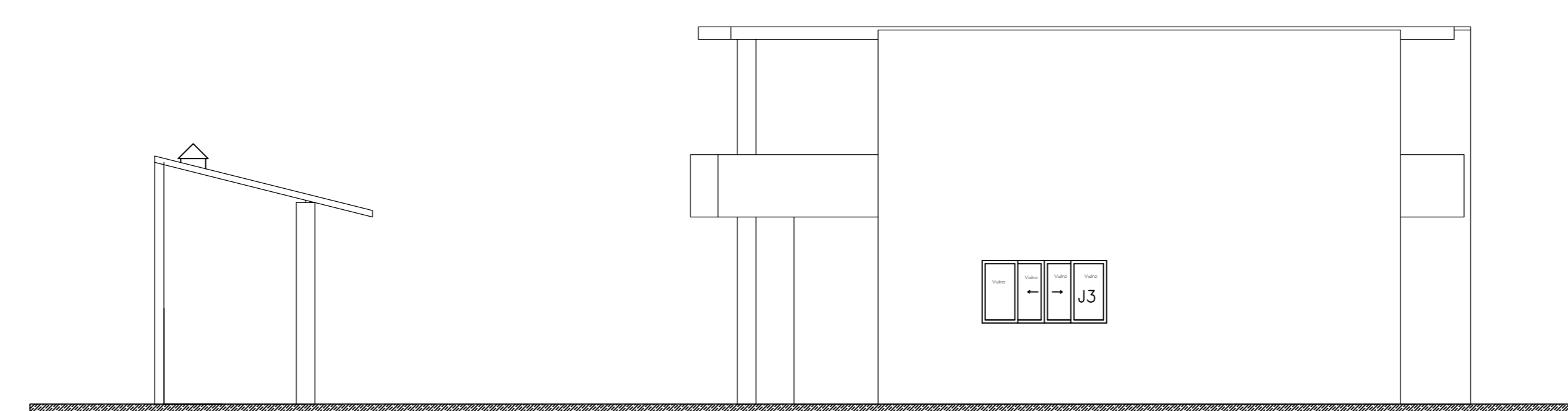
Planta Sul - Academia



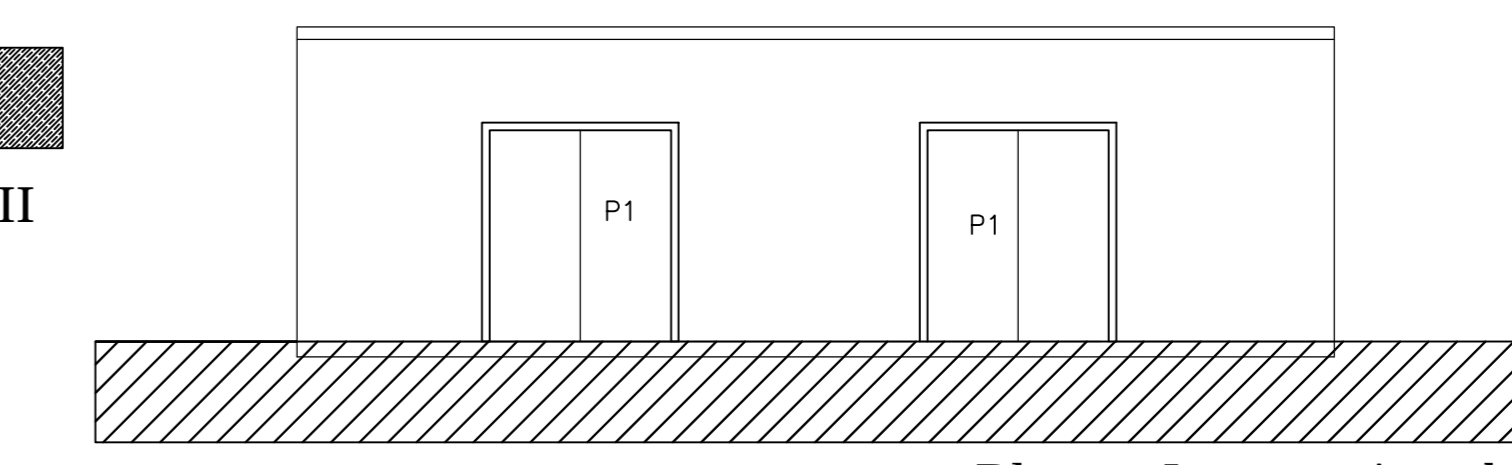
Fachada Norte - Casa tipo II



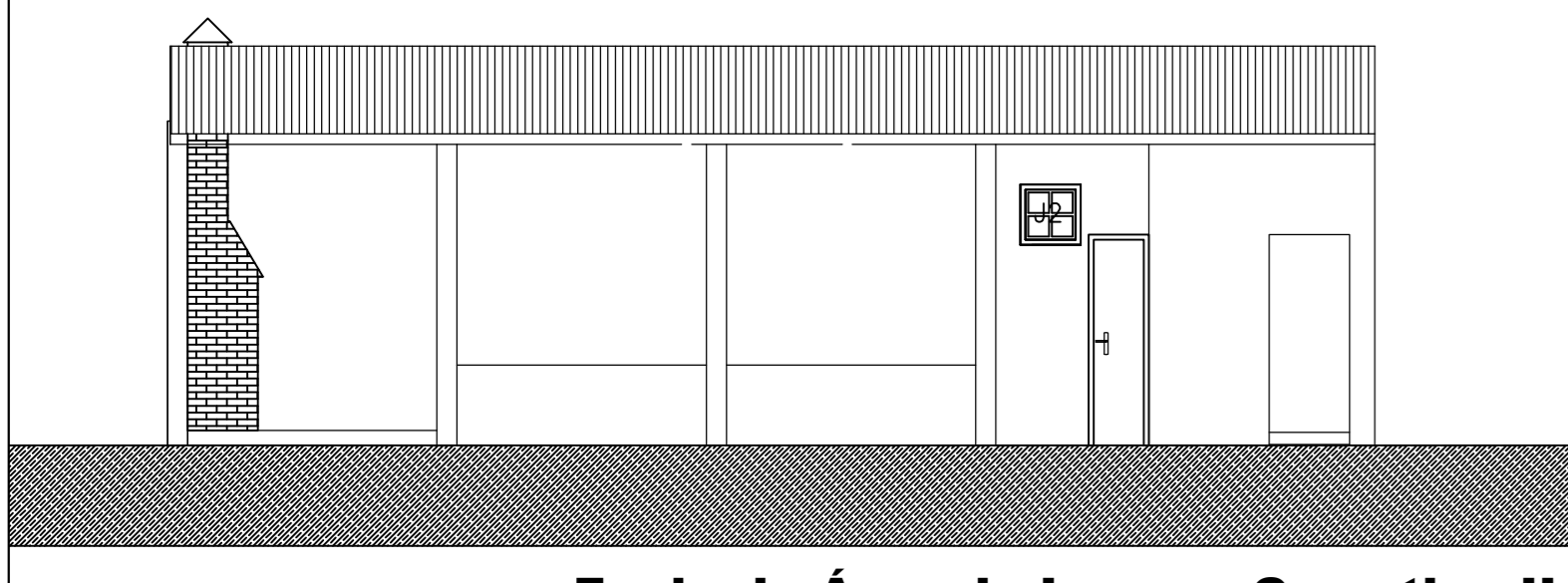
Fachada Sul - Casa tipo II



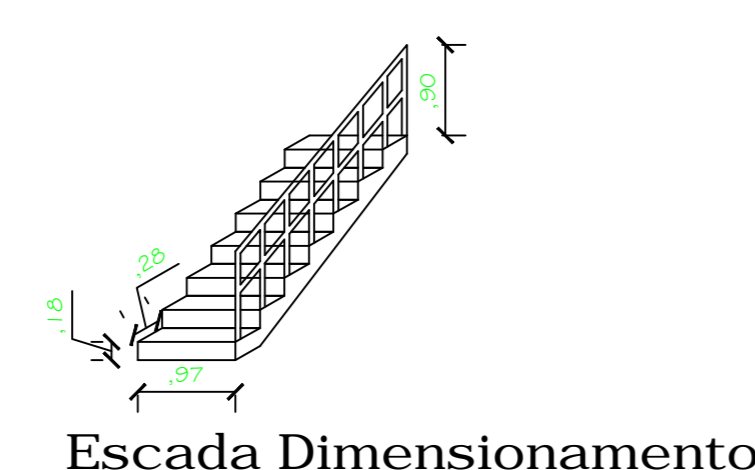
Fachada Oeste - Casa tipo II



Planta Leste - Academia



Fachada Área de Lazer - Casa tipo II



Escada Dimensionamento

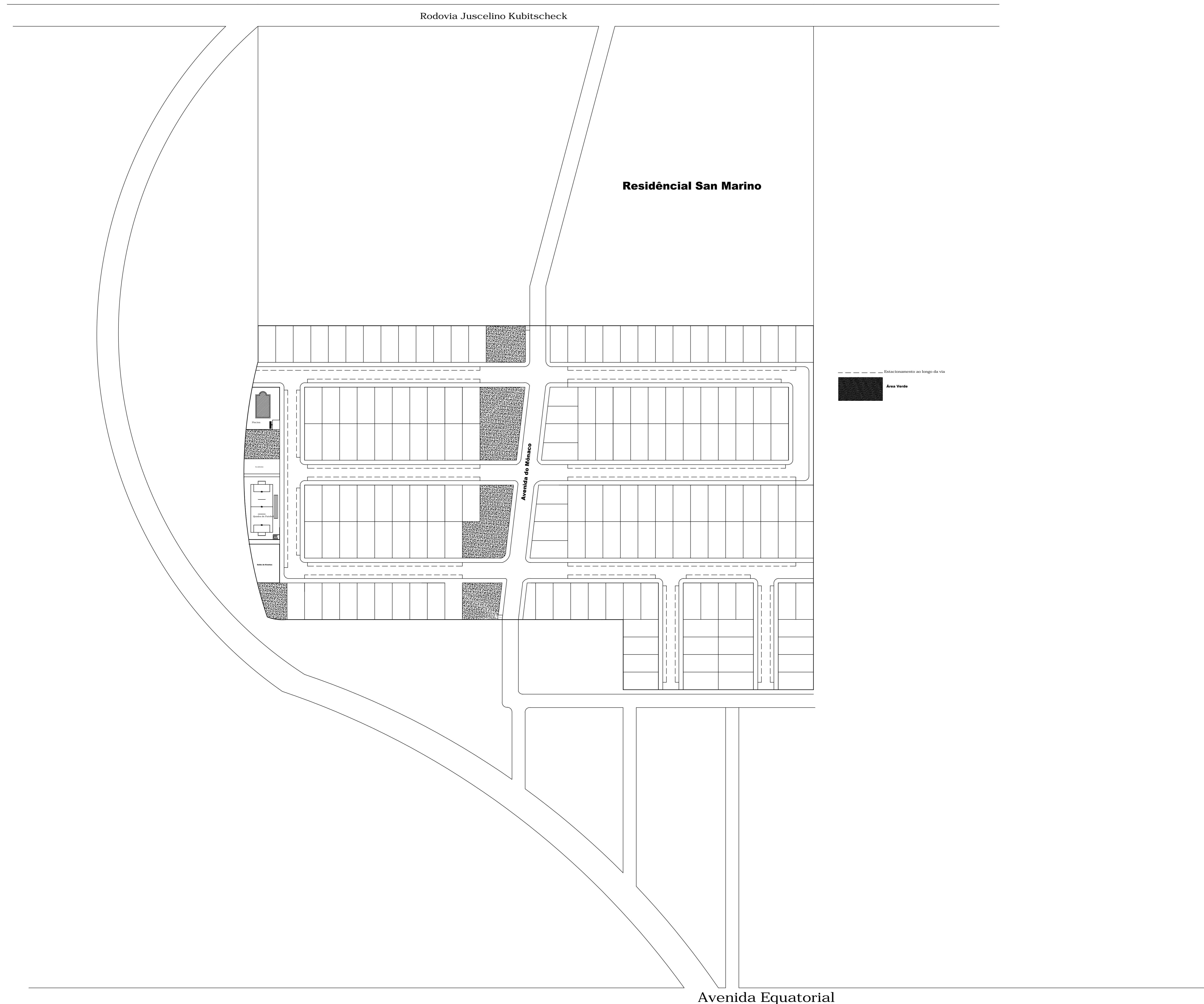
LEGENDA ESQUADRIA CASA TIPO II:

JANELAS	PORTAS
J1 1,00x1,00/1,00	P1 1,60x2,10
J2 0,60x0,60/2,00	P2 0,80x2,10
J3 2,00x1,00/1,30	P3 0,60x2,10
J4 2,00x1,20/1,00	P4 1,70x2,10
	P5 3,00x2,10

Arquitetura e ferramentas digitais: Na elaboração de proposta arquitetônico-urbanístico para o residencial Mônaco (Macapá - AP)

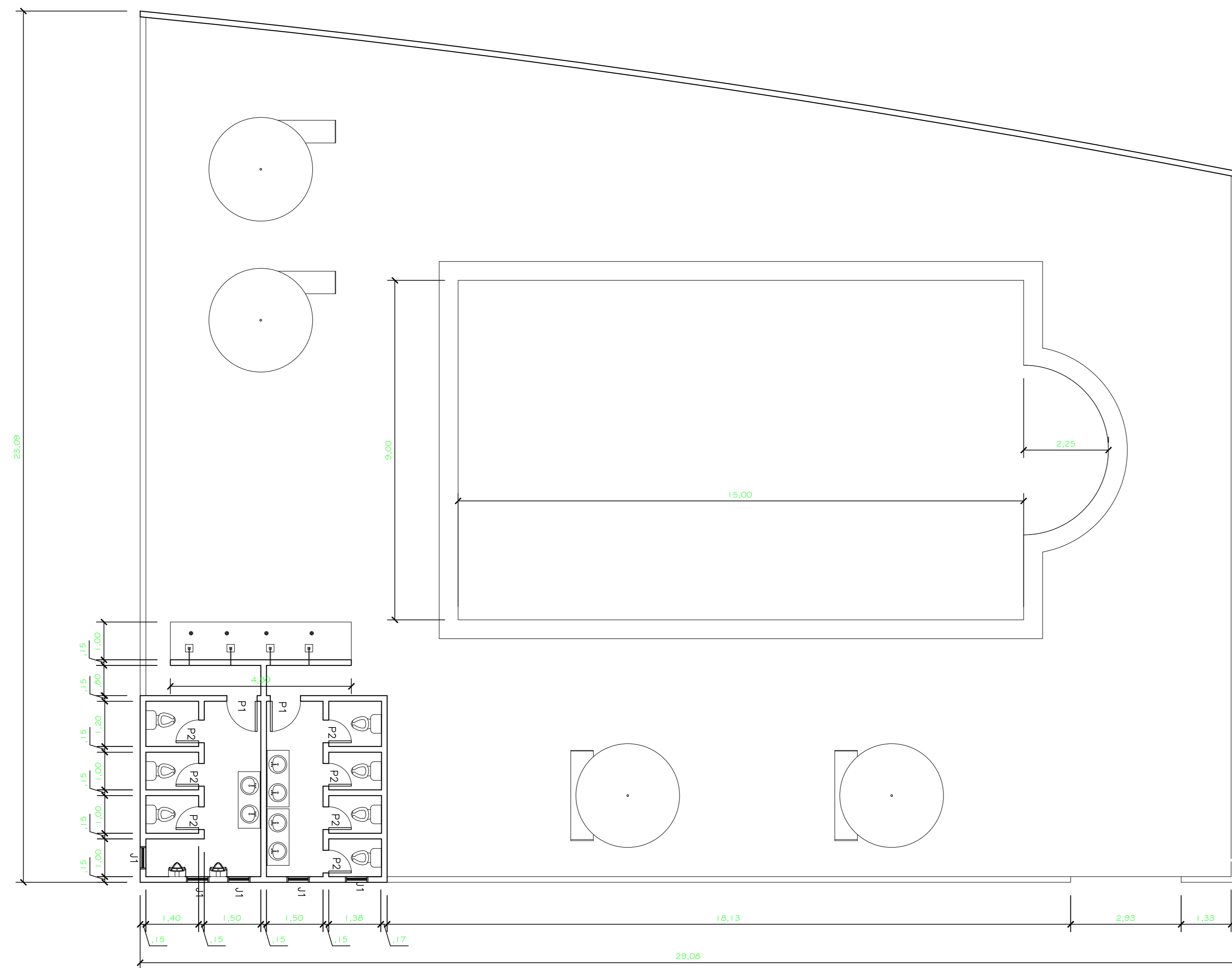
Residencial Conjunto Monaco

Conteúdo: Casa tipo 2 e Academia	Tipo: Arquitetônico
Curso: Arquitetura e Urbanismo	Turma: AU2008
Disciplina: TCC 2	Orientador: André Barros Coelho
Acadêmico: Narjara Vilhena Aguiar - 200804005	
Escala: 1:75	Data: 19/02/2014
	A3

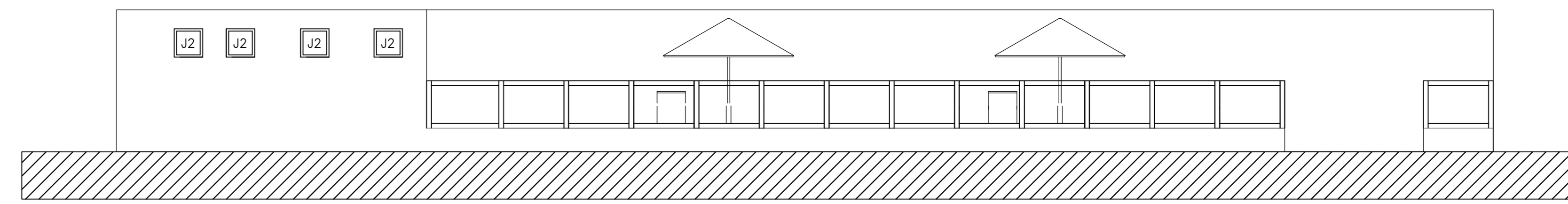


Planta Geral/Localização

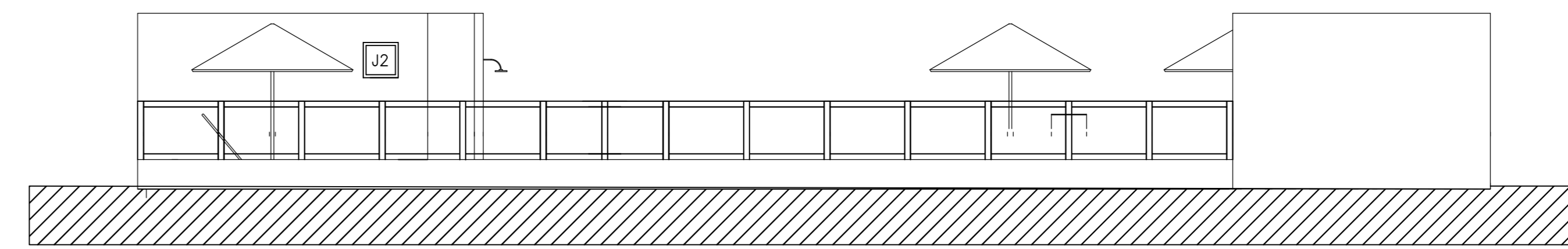
Arquitetura e ferramentas digitais: Na elaboração de proposta arquitetônico-urbanístico para o residencial Mônaco (Macapá - AP)	
Residencial Conjunto Monaco	
Conteúdo: Planta Geral / Localização	Tipo: Arquitetônico
Arquitetura e Urbanismo	ma: AU2008
Disciplina: TCC 2	Orientador: André Barros Coelho
Acadêmica: Narjara Vilhena Aguiar - 200804005	A1
Escala: Sem Escala	



Planta Baixa - Piscina



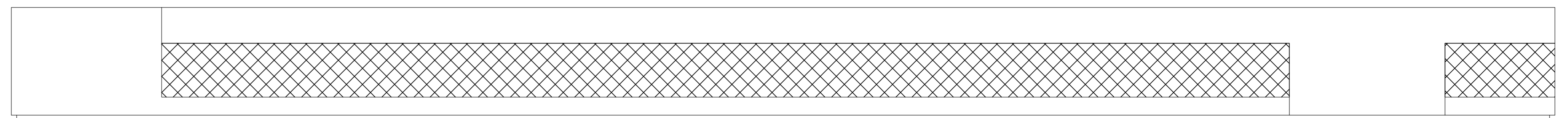
Fachada Leste - Piscina



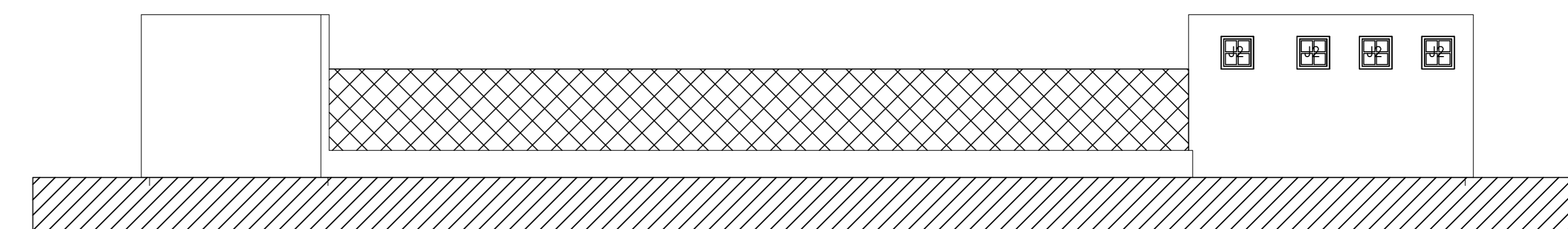
Fachada Sul - Piscina

LEGENDA ESQUADRIAS PISCINA:

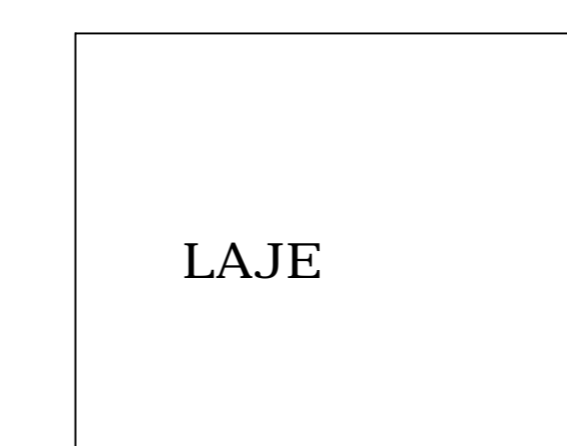
JANELAS		PORTAS	
J1	0,60x0,60/2,00	P1	0,80x2,10
		P2	0,60x2,10



Fachada Leste - Campo



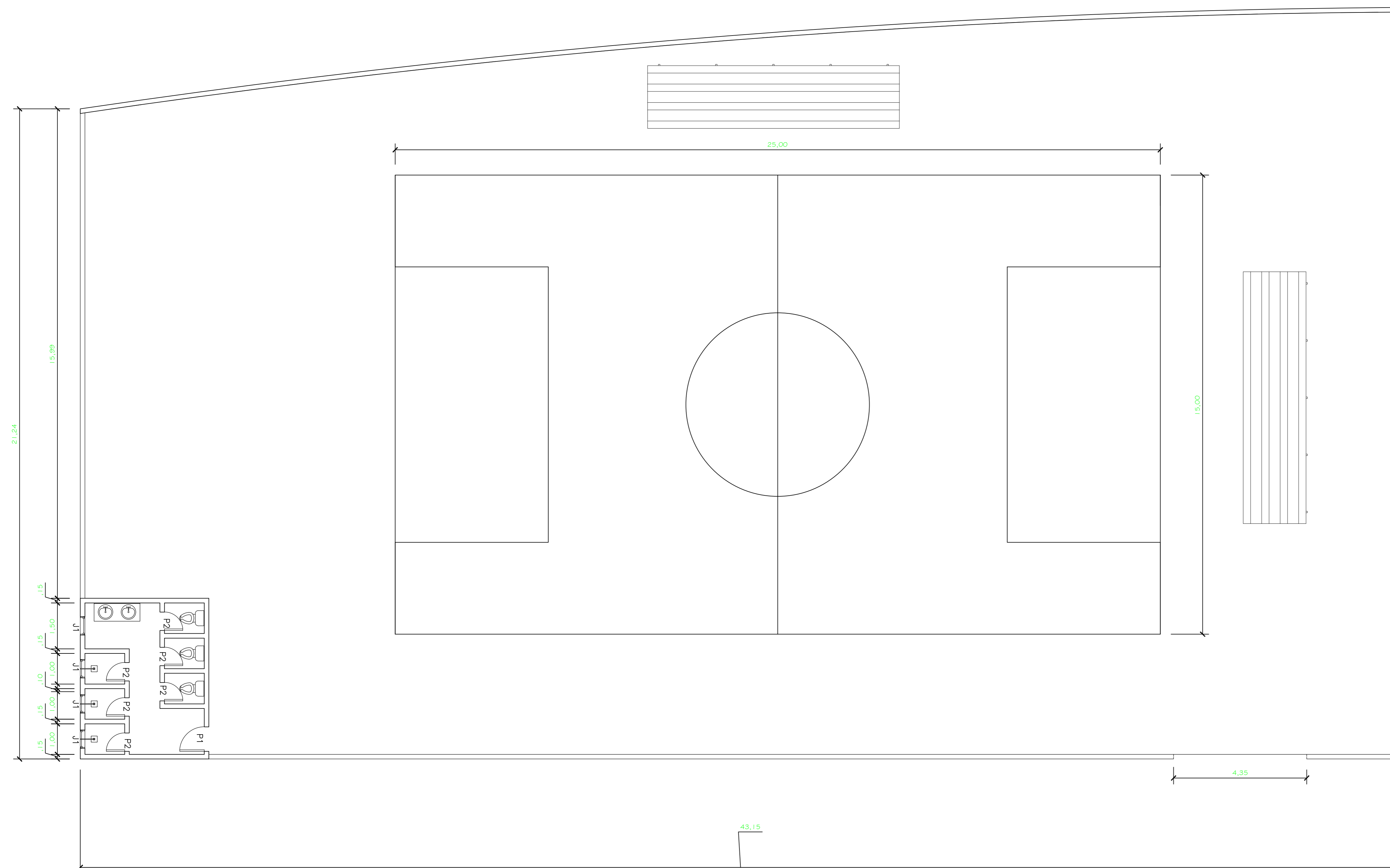
Fachada Sul - Campo



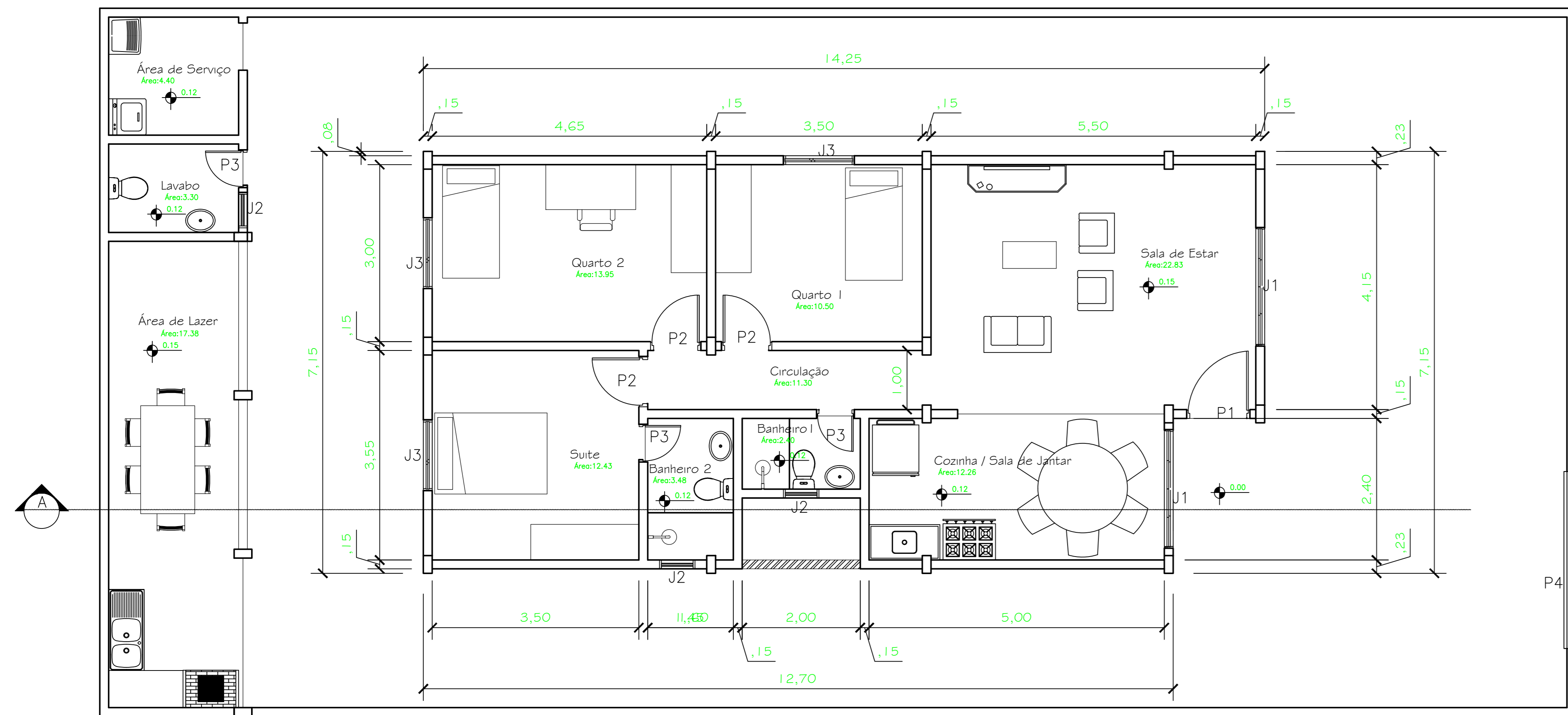
Cobertura Banheiro - Campo

LEGENDA CAMPO:

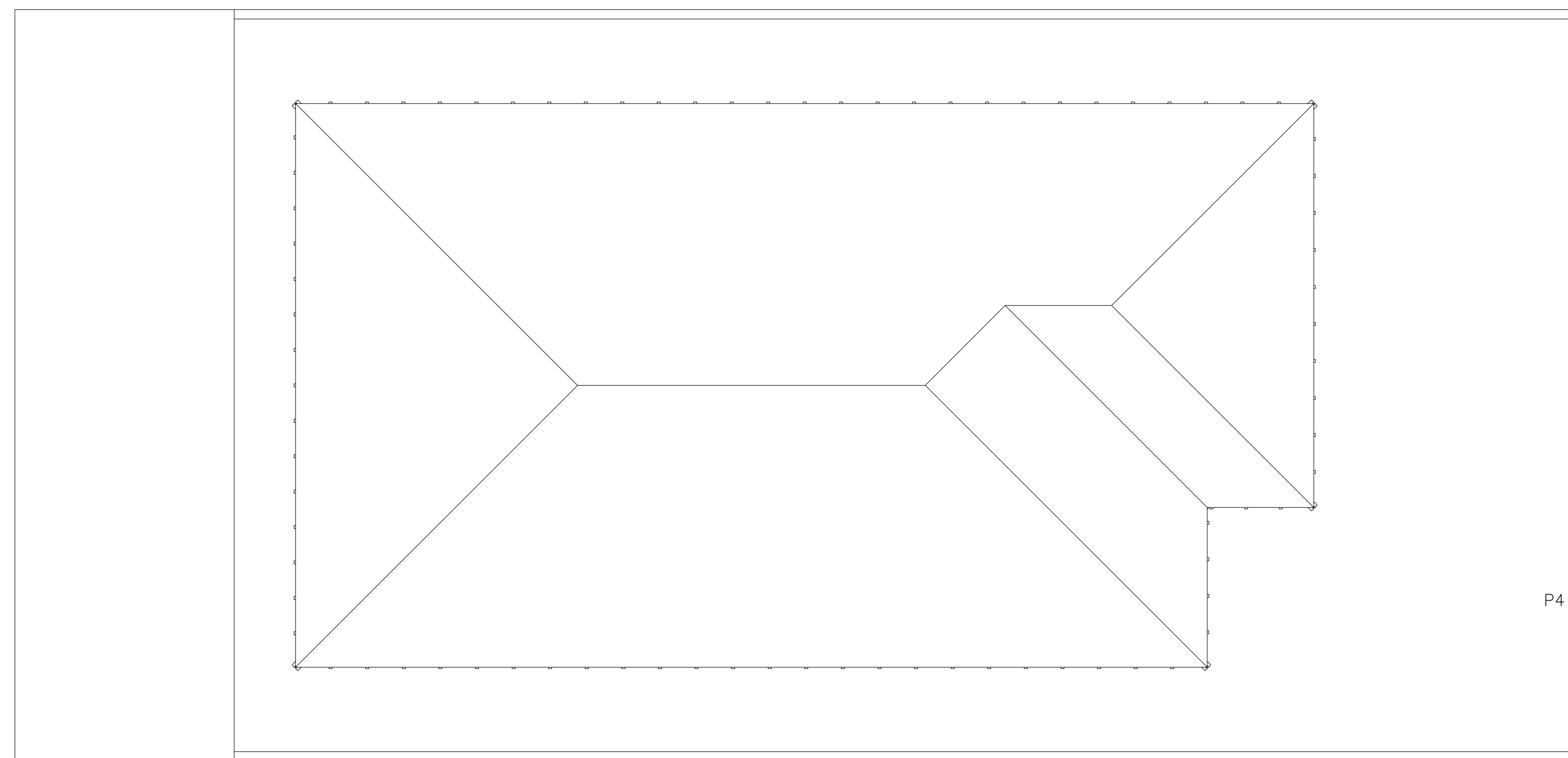
JANELAS		PORTAS	
J1	0,60x0,60/2,00	P1	0,80x2,10
		P2	0,60x2,10



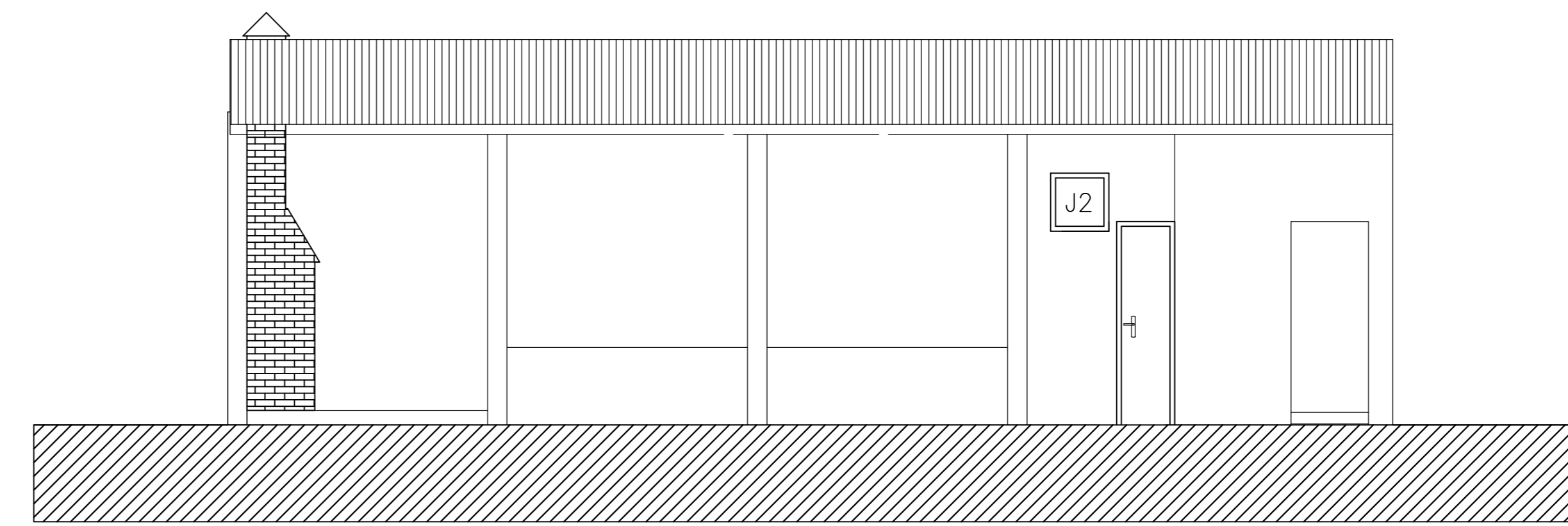
C:\Users\Nah\Desktop\Logo (1).png		
Arquitetura e ferramentas digitais: Na elaboração de proposta arquitetônico-urbanístico para o residencial Mônaco (Macapá - AP)		
Residencial Conjunto Monaco		
Conteúdo: Piscina e Campo	Tipo: Arquitetônico	
Curso: Arquitetura e Urbanismo	Turma: AU2008	
Disciplina: TCC 2	Orientador: André Barros Coelho	
Acadêmico: Narjara Vilhena Aguiar - 200804005	A4	
Escala: 1:75	Data: 19/02/2014	



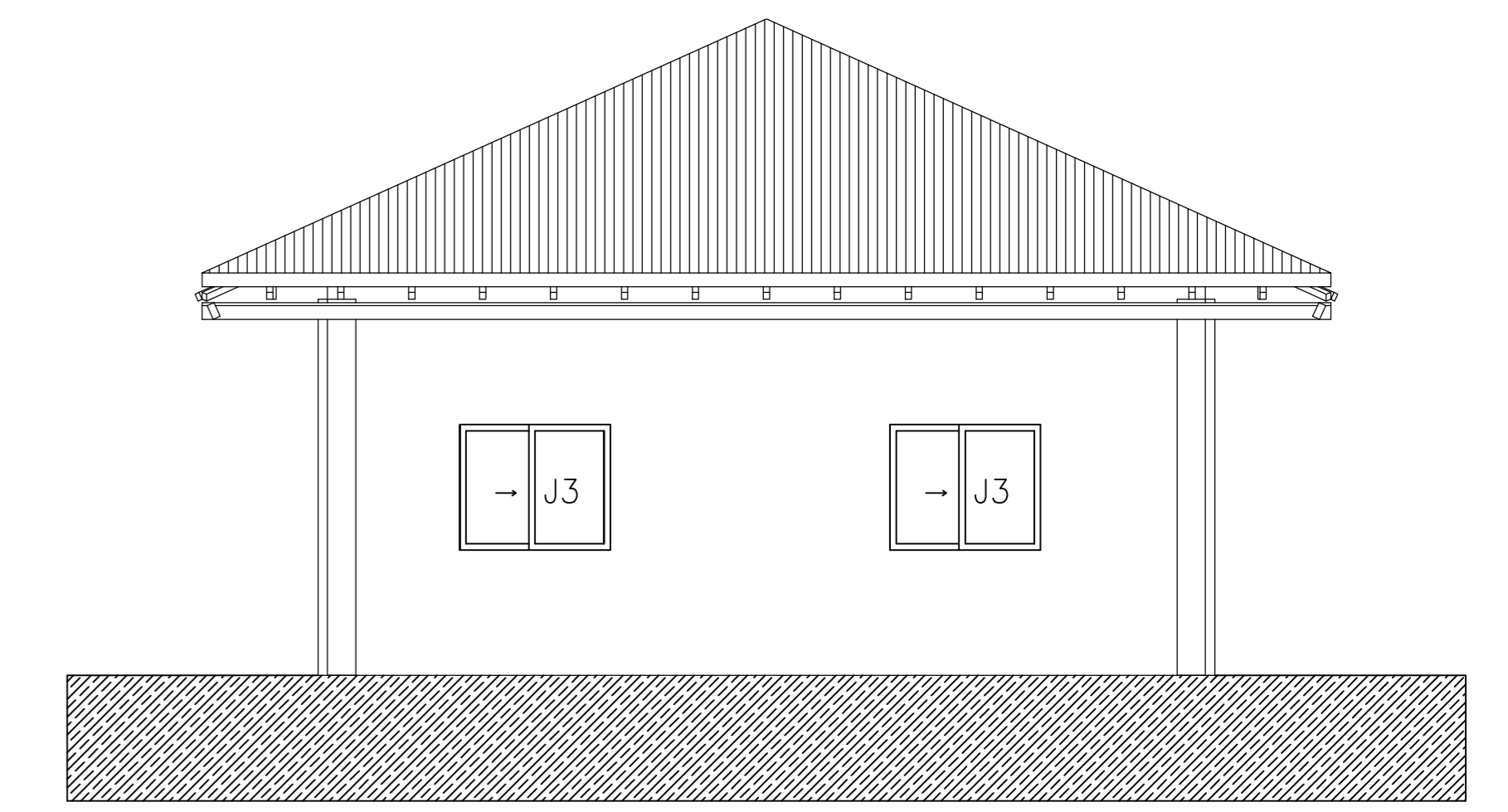
Planta Baixa- Terreo



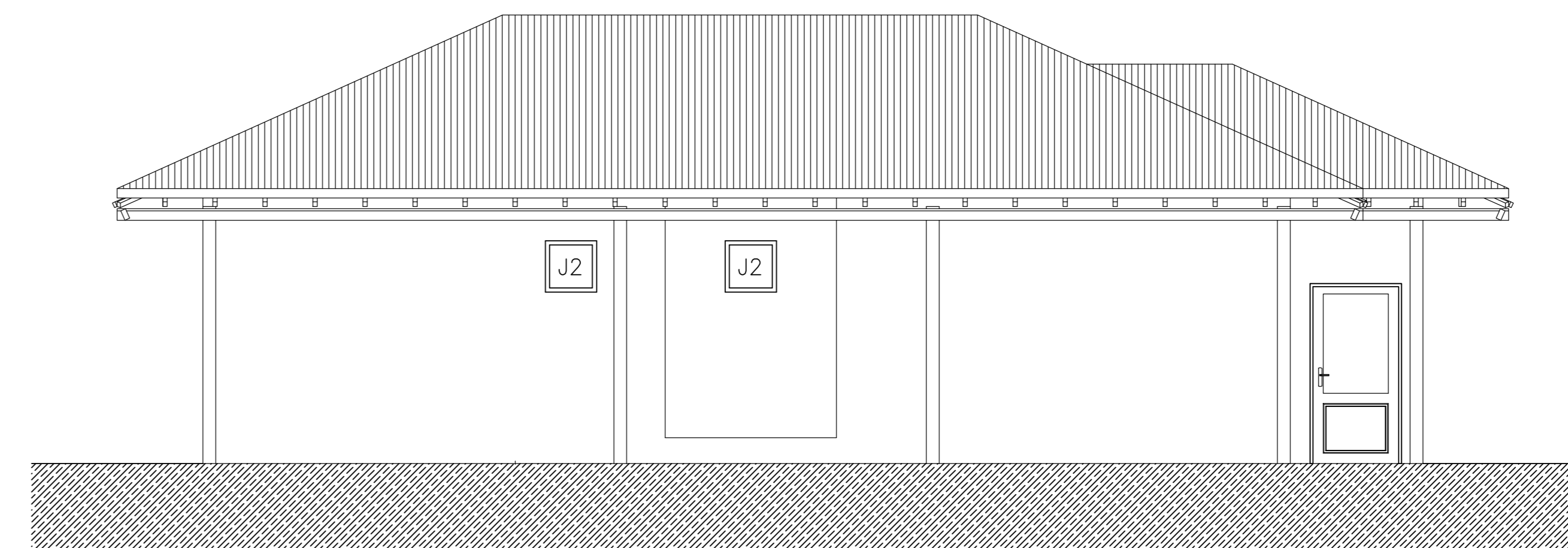
Planta de Cobertura



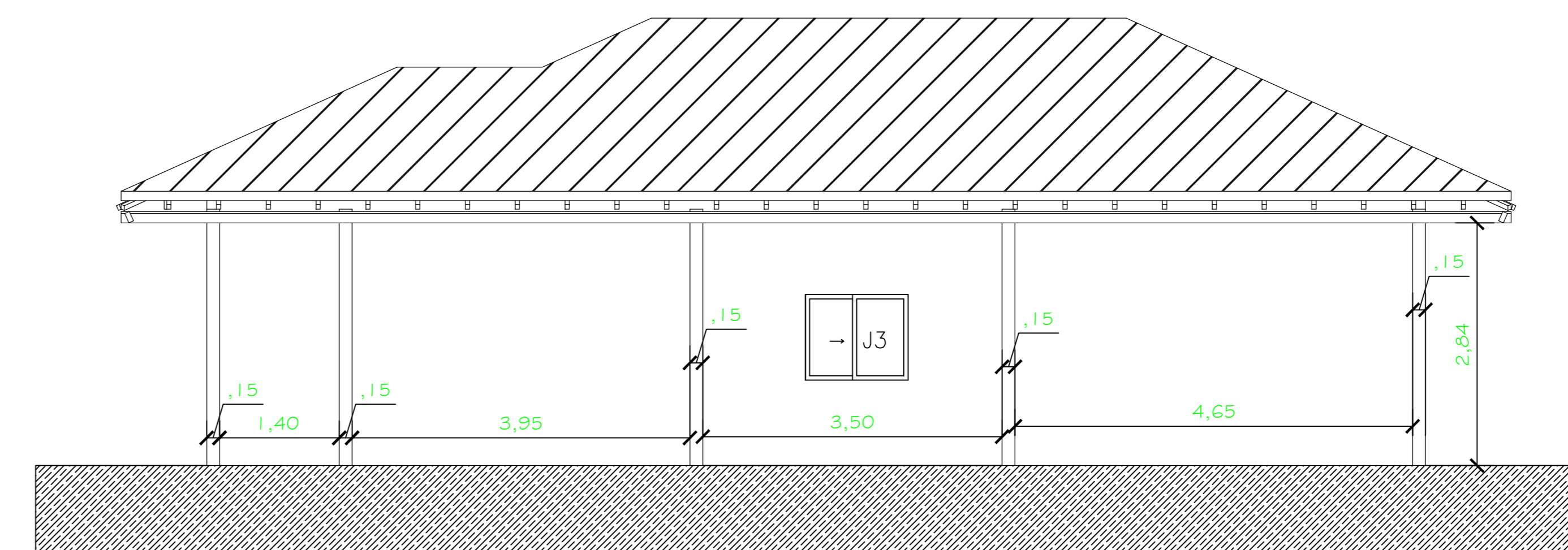
Fachada Área de Lazer



Fachada Sul



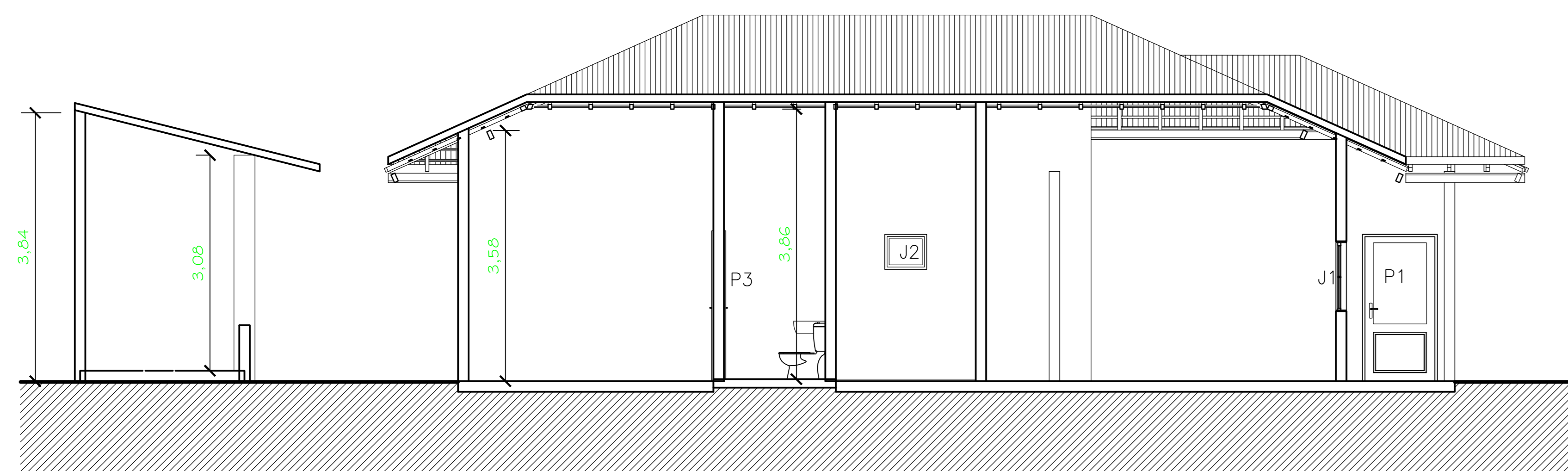
Fachada Oeste



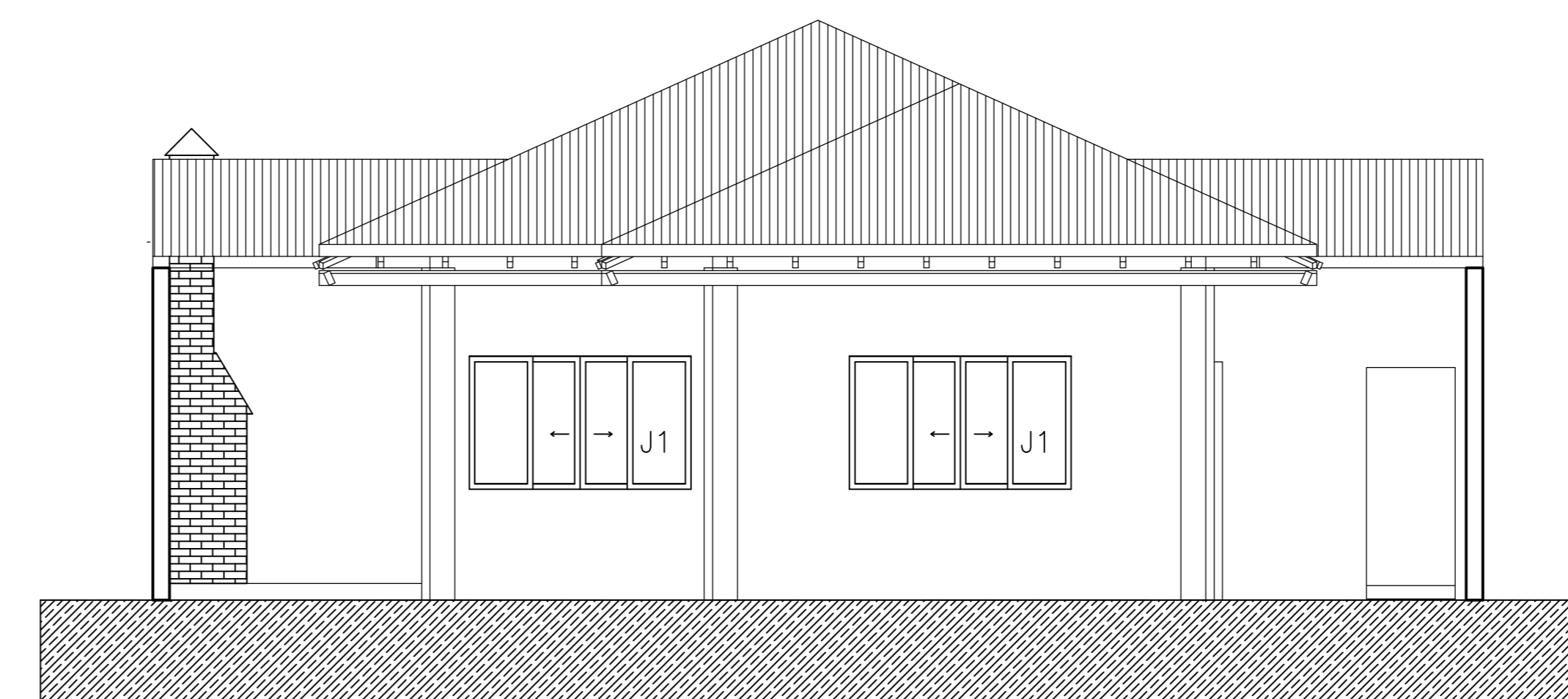
Fachada Leste

LEGENDA ESQUADRIAS CASA TIPO 1:

JANELAS		PORTAS	
J1	2,00x1,20/1,00	P1	1,00x2,10
J2	0,60x0,60/2,00	P2	0,80x2,10
J3	1,20x1,00/1,00	P3	0,60x2,10
		P4	3,00x2,10



Corte A



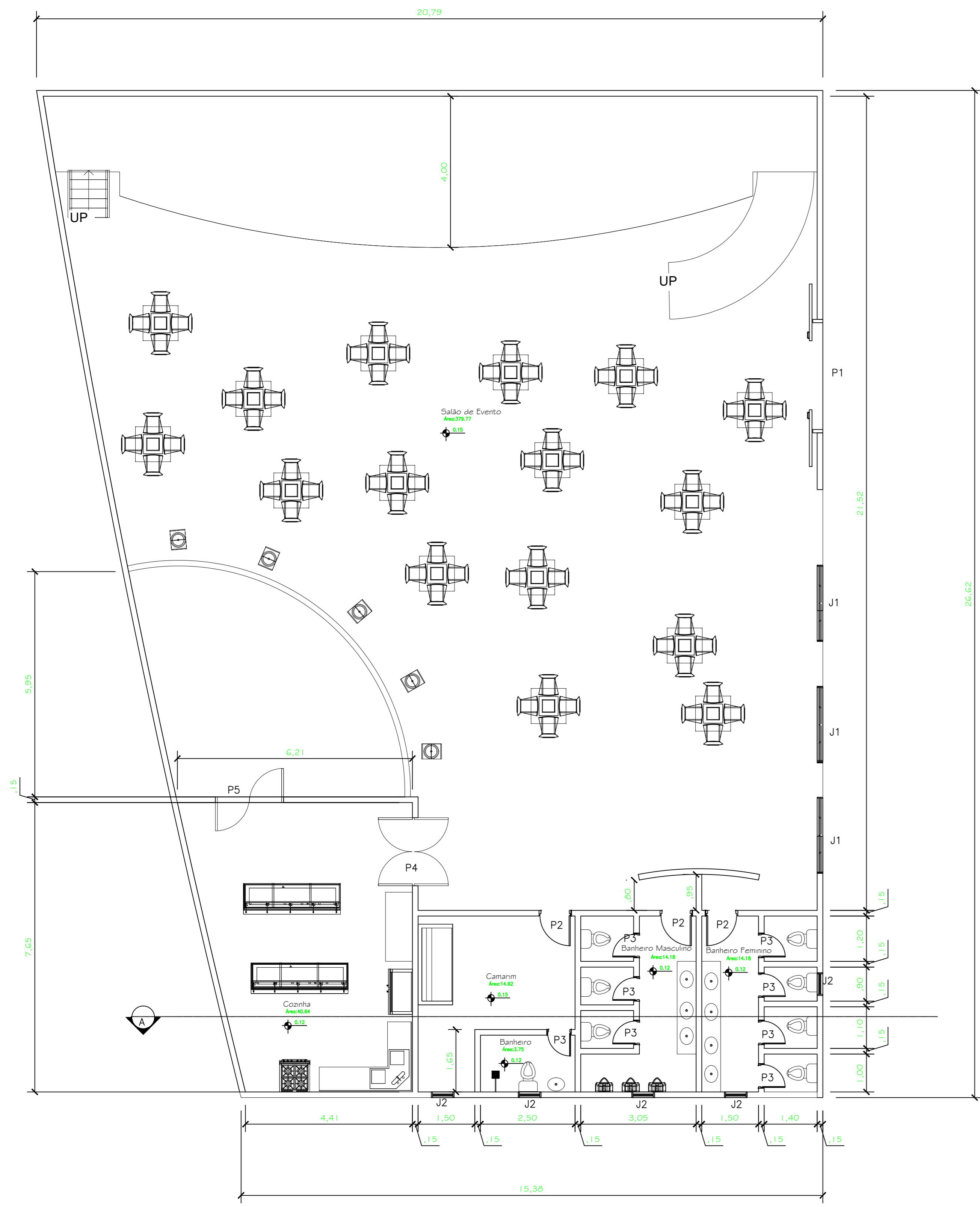
Fachada Norte



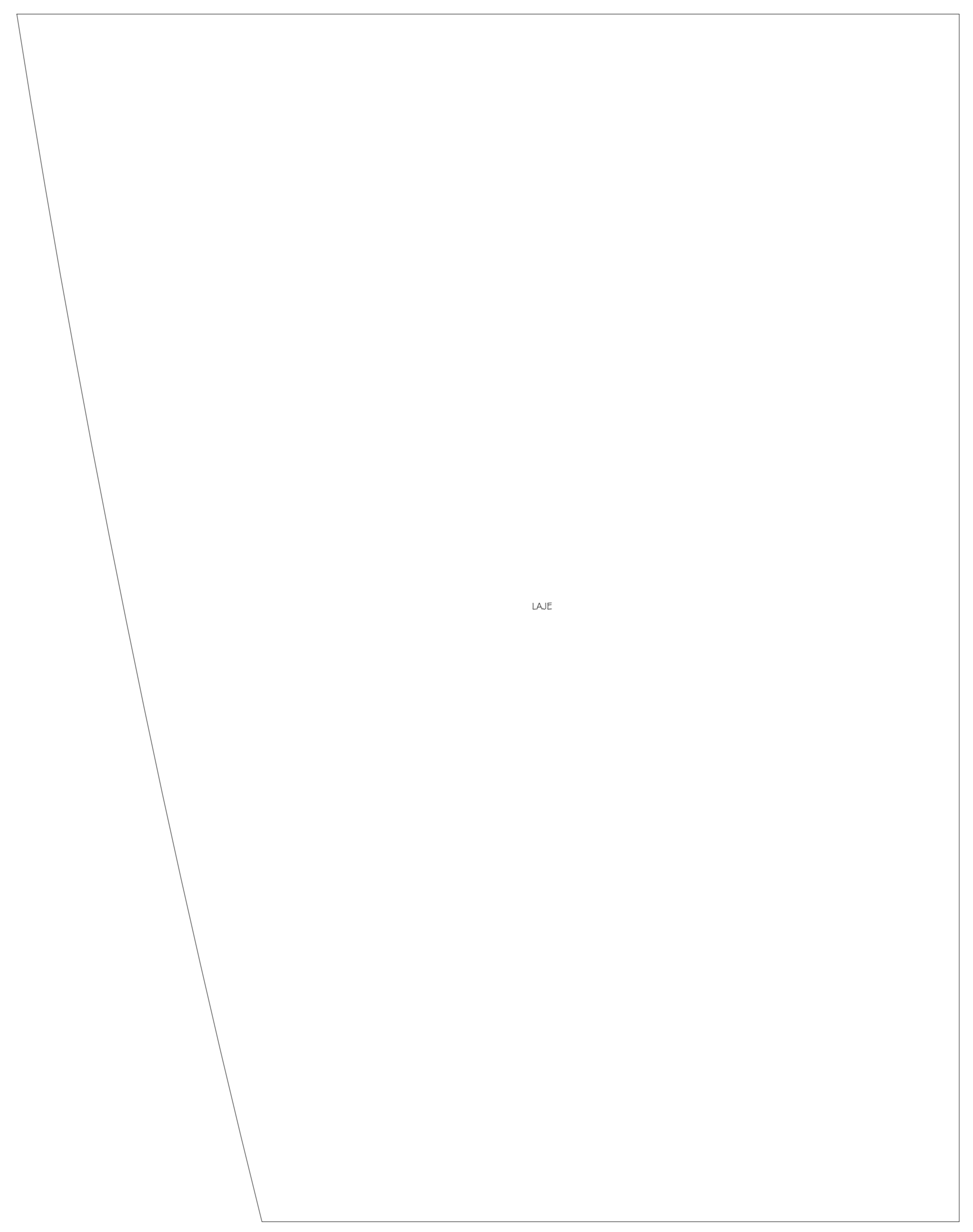
Arquitetura e ferramentas digitais: Na elaboração de proposta arquitetônico-urbanístico para o residencial Mônaco (Macapá - AP)

Residencial Conjunto Monaco

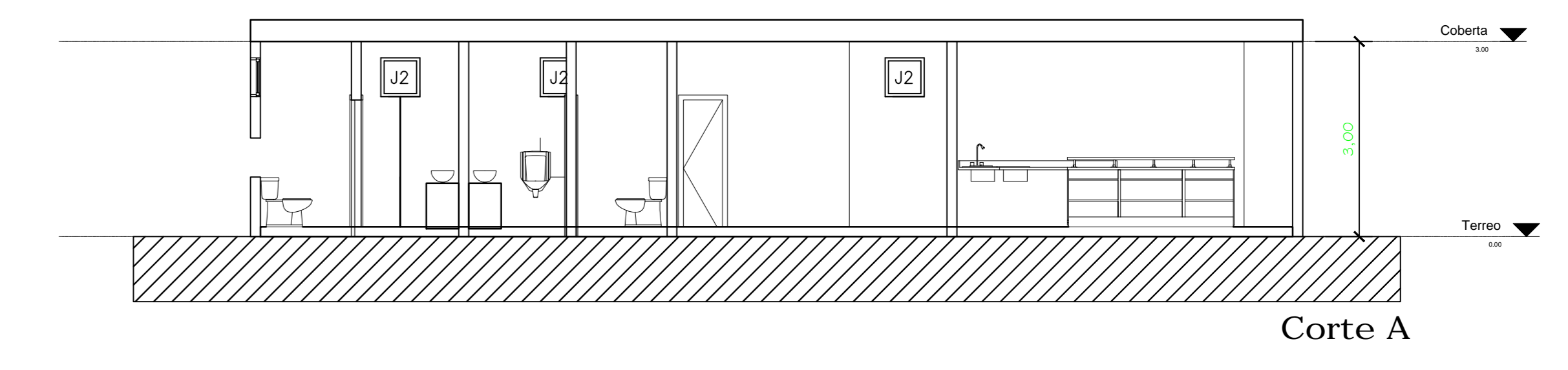
Conteúdo: Casa Tipo 1	Tipo: Arquitetônico
Curso: Arquitetura e Urbanismo	Turma: AU2008
Disciplina: TCC 2	Orientador: André Barros Coelho
Acadêmico: Narjara Vilhena Aguiar - 200804005	A2
Escala: 1:50	Data: 19/02/2014



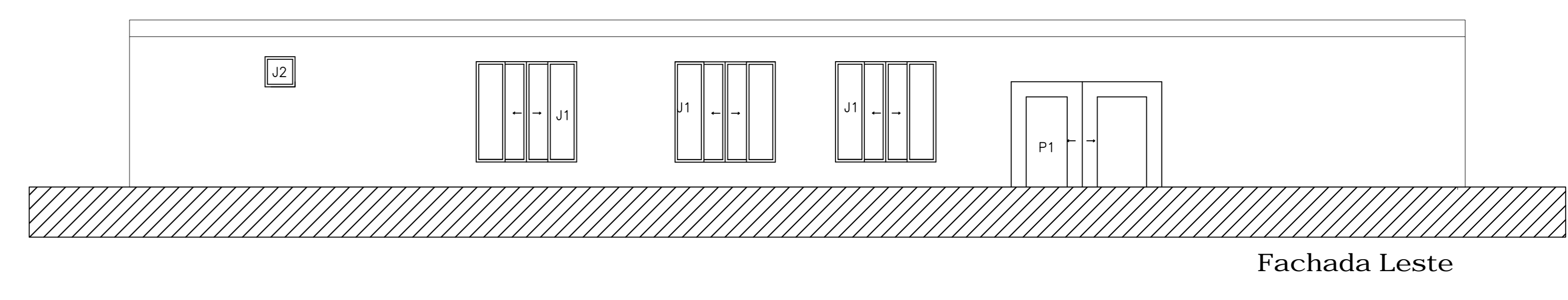
Planta Baixa



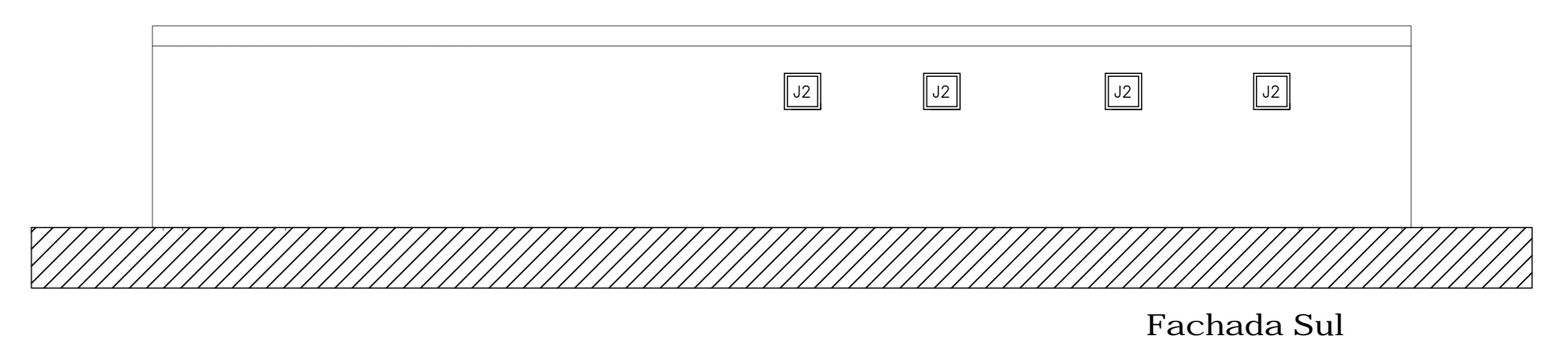
Planta Cobertura



Corte A



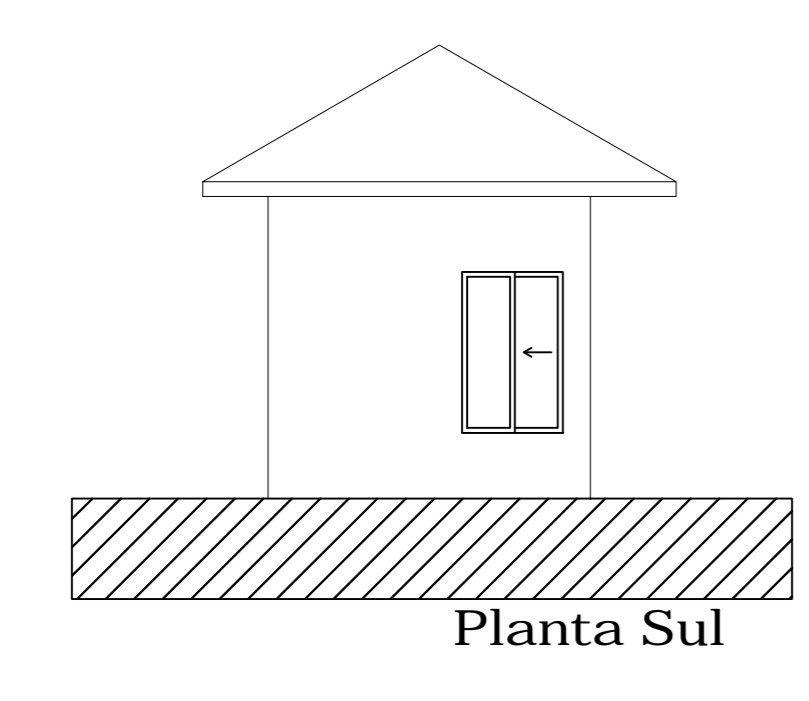
Fachada Leste



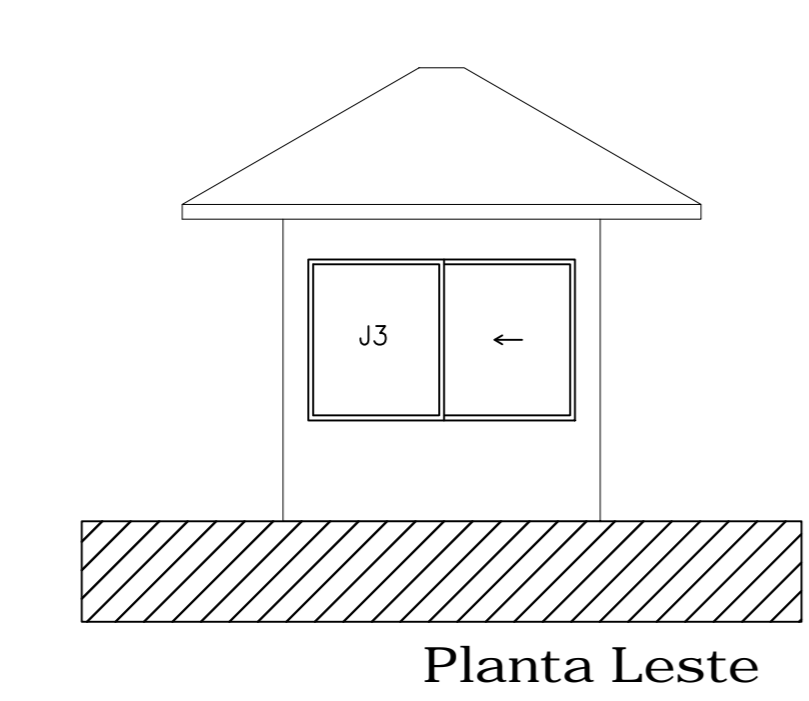
Fachada Sul

LEGENDA ESQUADRIA SALÃO DE EVENTOS

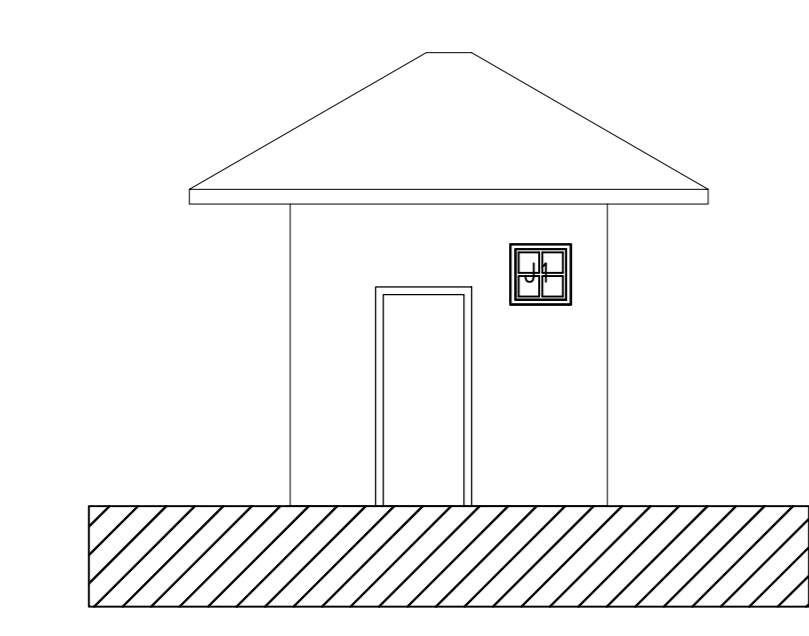
JANELAS		PORTAS	
J1	2,00x2,00/0,50	P1	3,00x2,10
J2	0,60x0,60/2,00	P2	0,80x2,10
		P3	0,60x2,10
		P4	1,80x2,10
		P5	1,80x2,10



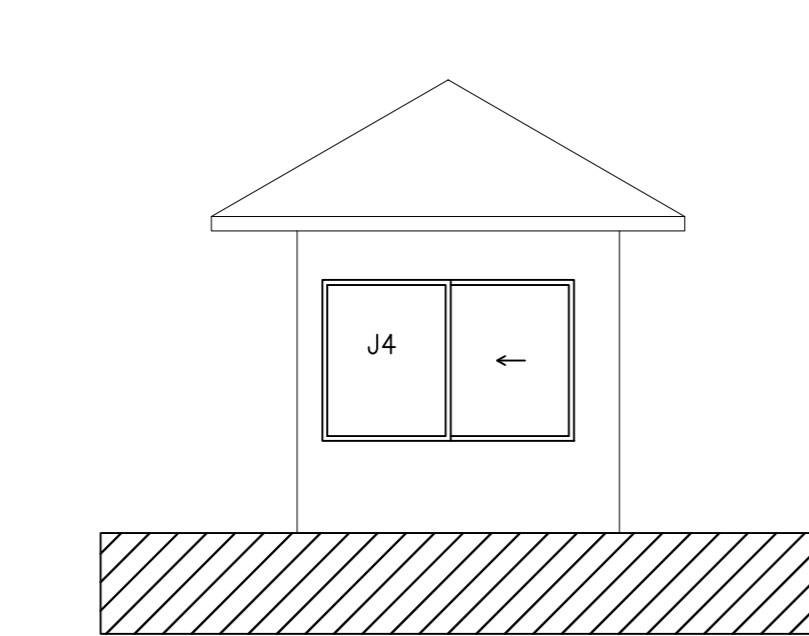
Planta Sul



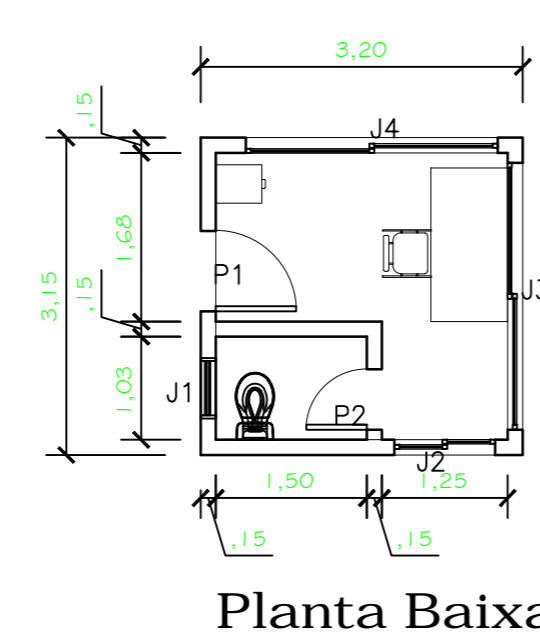
Planta Leste



Planta Oeste



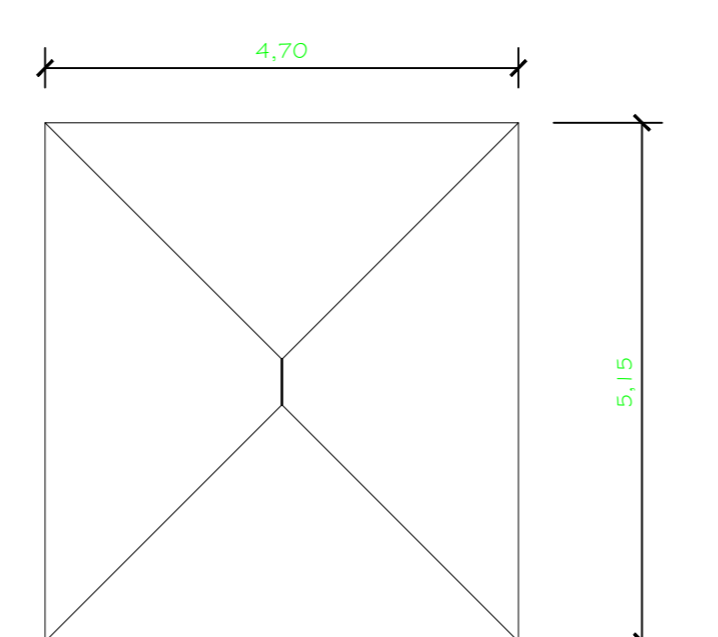
Planta Norte



Planta Baixa

LEGENDA GUARITA:

JANELAS		PORTAS	
J1	0,60x0,60/2,00	P1	0,80x2,10
J2	1,00x1,20/1,00	P2	0,60x2,10
J3	2,50x1,20/1,00		
J4	2,50x1,20/1,00		



Planta Cobertura

C:\Users\Nah\Desktop\logo (1).png

Arquitetura e ferramentas digitais: Na elaboração de proposta arquitetônico-urbanístico para o residencial Mônaco (Macapá - AP)

Residencial Conjunto Monaco

Conteúdo: Salão de eventos e Guarita	Tipo: Arquitetônico
Curso: Arquitetura e Urbanismo	Turma: AU2008
Disciplina: TCC 2	Orientador: André Barros Coelho
Acadêmico: Narjara Vilhena Aguiar - 200804005	A5
Escala: 1:75	Data: 19/02/2014